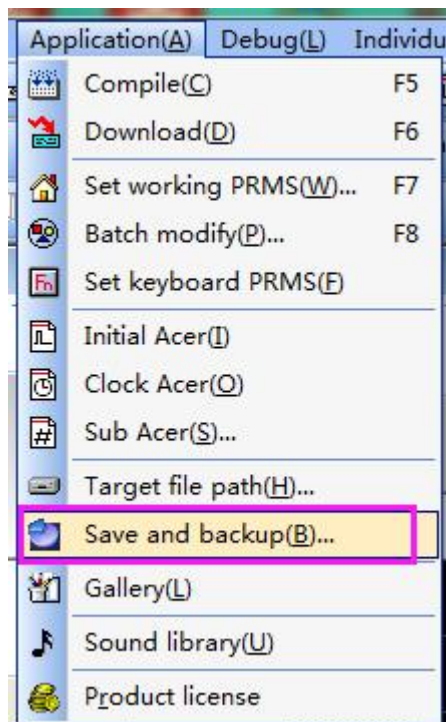


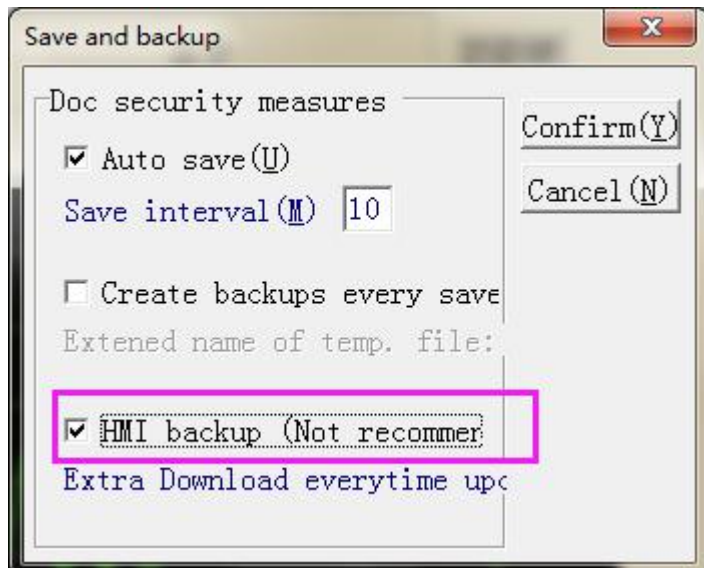
The setting procedure of HMI program being read

The HMI program does not support being read by default. It can be supported by setting the following settings:

1. Open the Application of HMI software, then click save and backup.



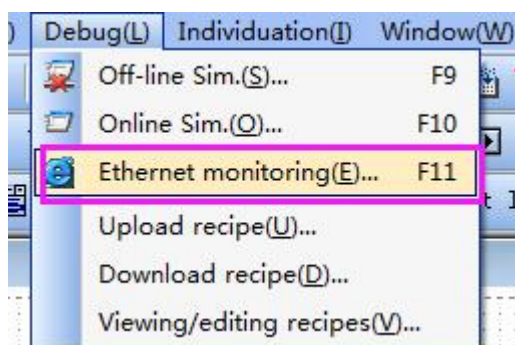
2. Mark the HMI backup option



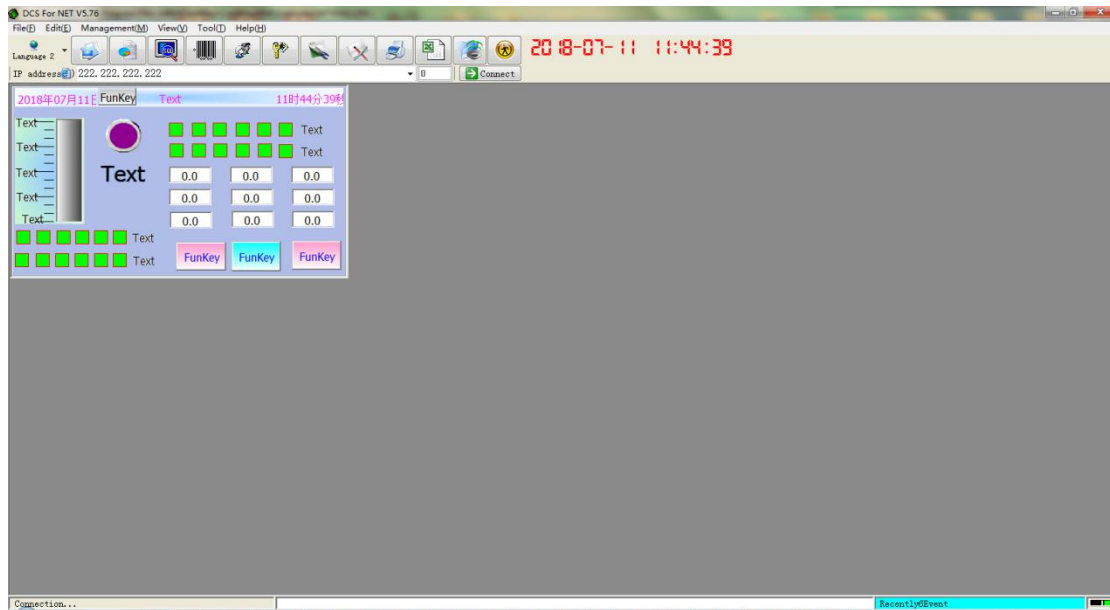
3. Compile the program and download to HMI, the program which running in HMI support being read.

The procedure of program being read

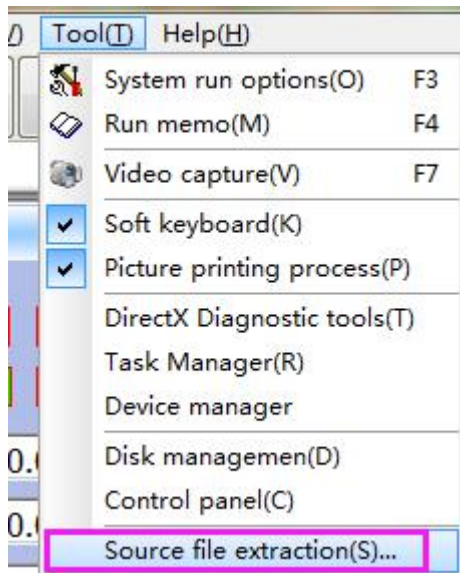
1. Power on HMI and connect HMI downloading cable and pc, then open application in HMI software then click Ethernet monitoring.



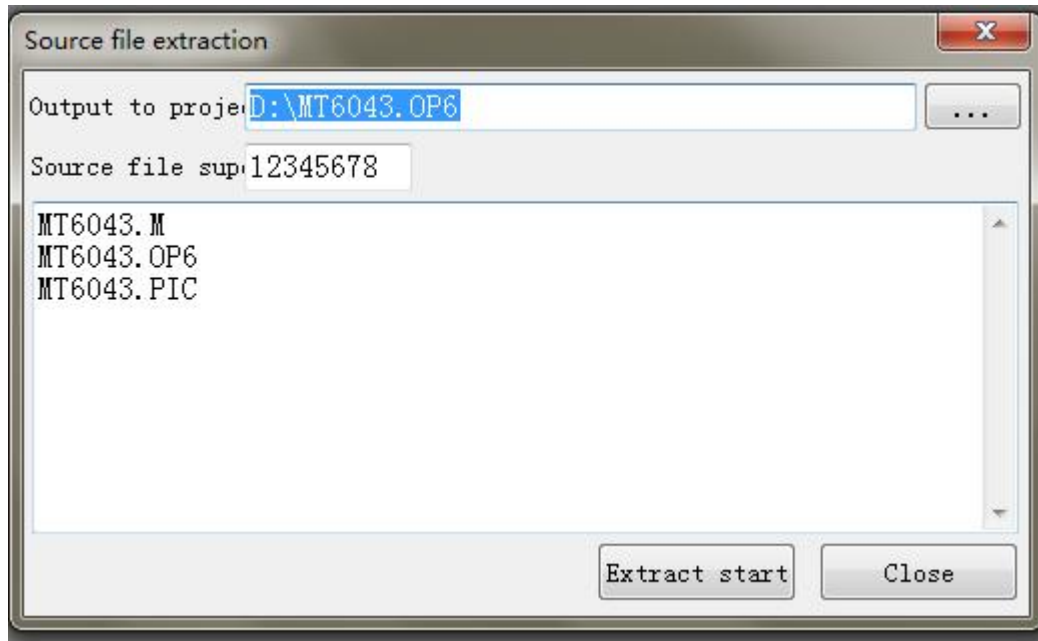
2. Choose IP address as 222.222.222.222, and click connecting



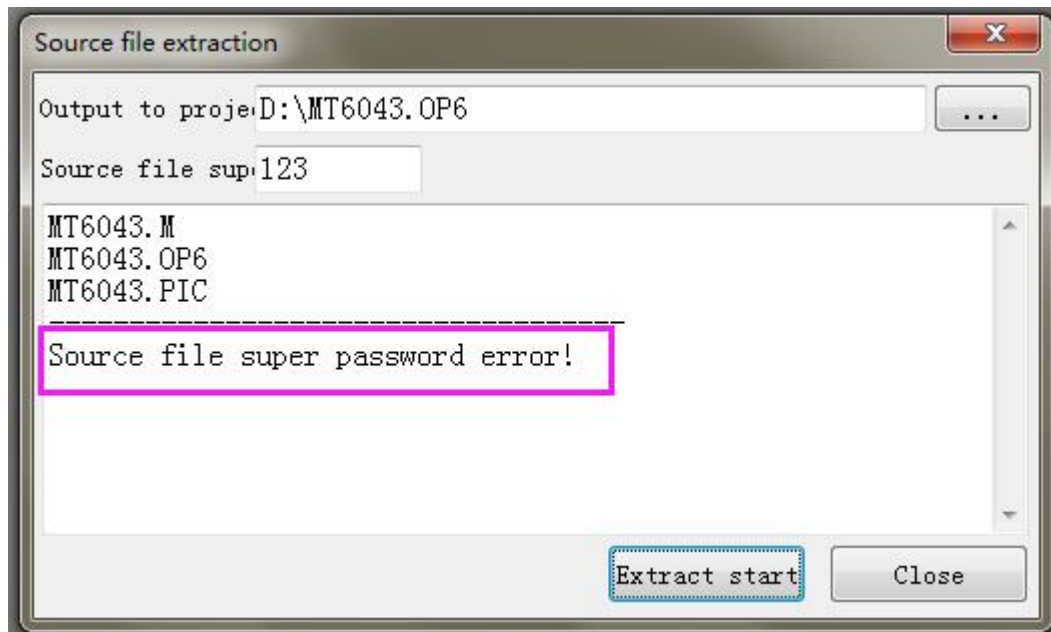
3. Open the source file extraction option in the Ethernet Monitoring Software Tool



4. The source file extraction window is popped up, and the storage address of the read file is set, and after reading, the program file read out can be found under the address; the source text super password is set, and the extraction start is selected;



Note: The source file super password is the super password of the program in the HMI. If you do not know the super password of the program in the HMI, it will prompt the source file super password error! That is, the read failed.



After the extraction is successful, you can open the computer D drive and view the read program.

