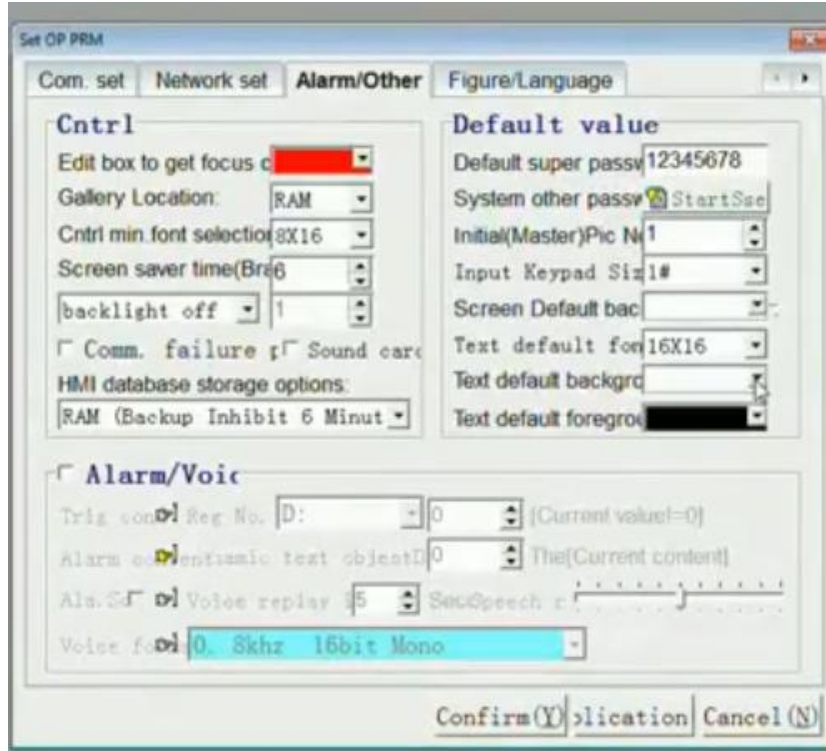
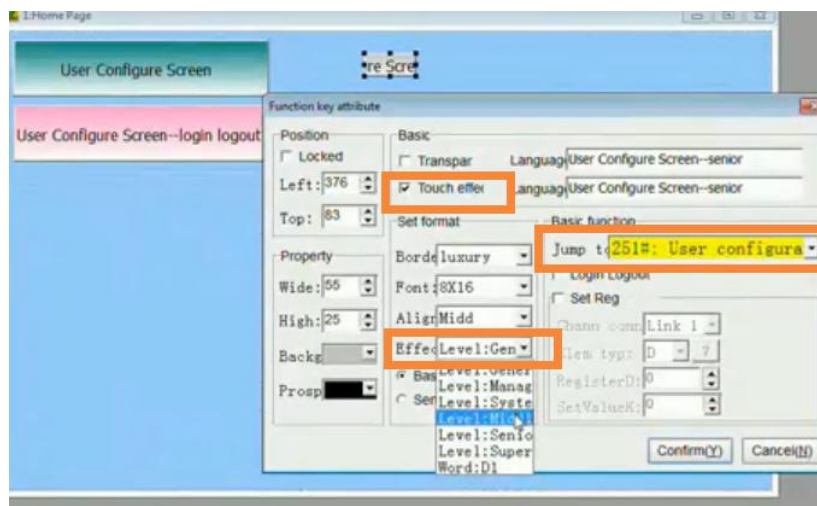


HMI User Right (password) Setting Instruction

1. Firstly set "System Preset Super Password"; Software Path: Application - Set Work Parameters - [Other Settings], set the position of the following figure:



2. Make a function key on the user edit screen, double-click to set its property to: jump to No. 251: user configuration screen, check before the touch is valid, effectively select super, as shown in the three marked positions;



3. After compiling and downloading to the touch screen, after setting different levels of passwords, you can select different levels of permissions according to your needs in the future editing process. A super password belongs to the user with the highest privilege, and only he can set all levels of password.