

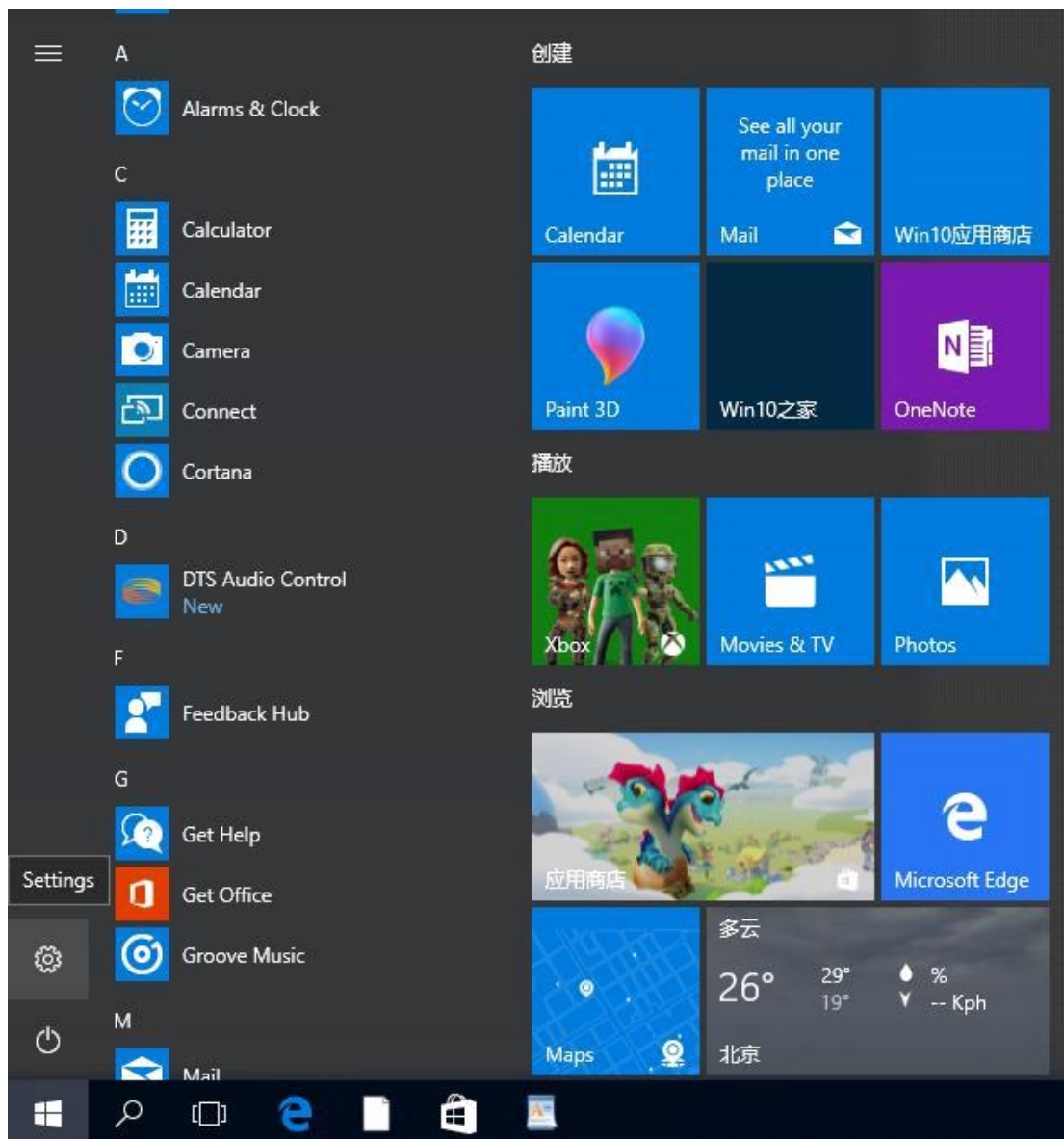
HMI Driver Installation Steps in Win10

Shenzhen Coolmay Technology Co.,Ltd.

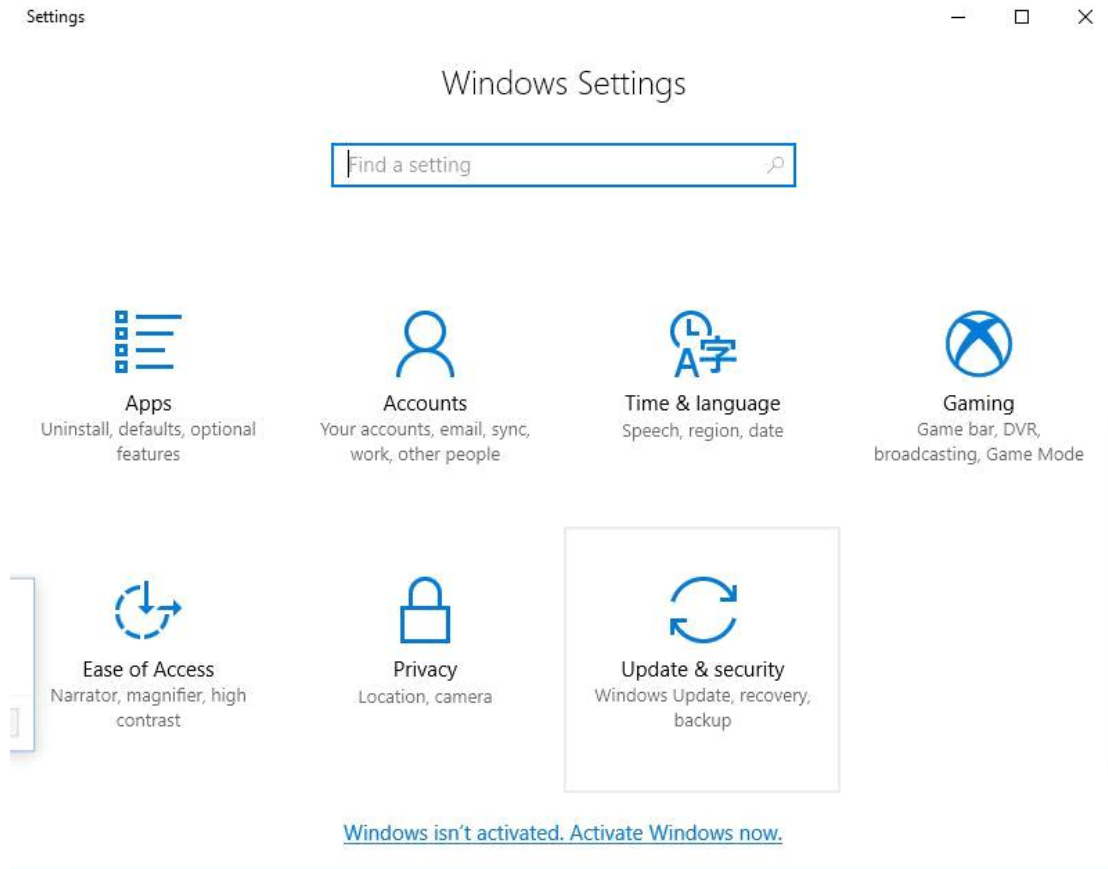
Version 1901

After installing Coolmay HMI program on Win10 system, only you need to ban driver signature, can program be downloaded successfully through HMI download cable. As when you finish step3, the pc will enter into Reset Settings interface, we suggest you take photos or remember when you enter step4 and step5, then start to operate.

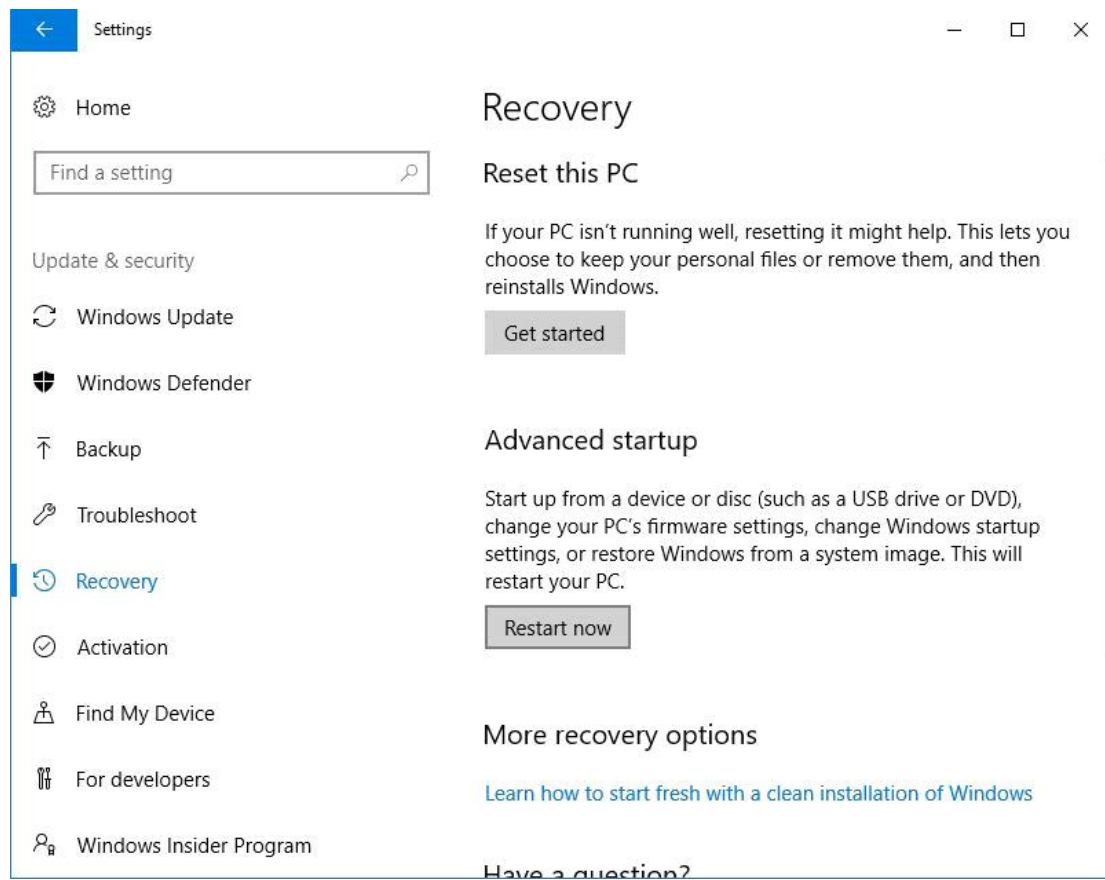
1. Click start button then click setting.



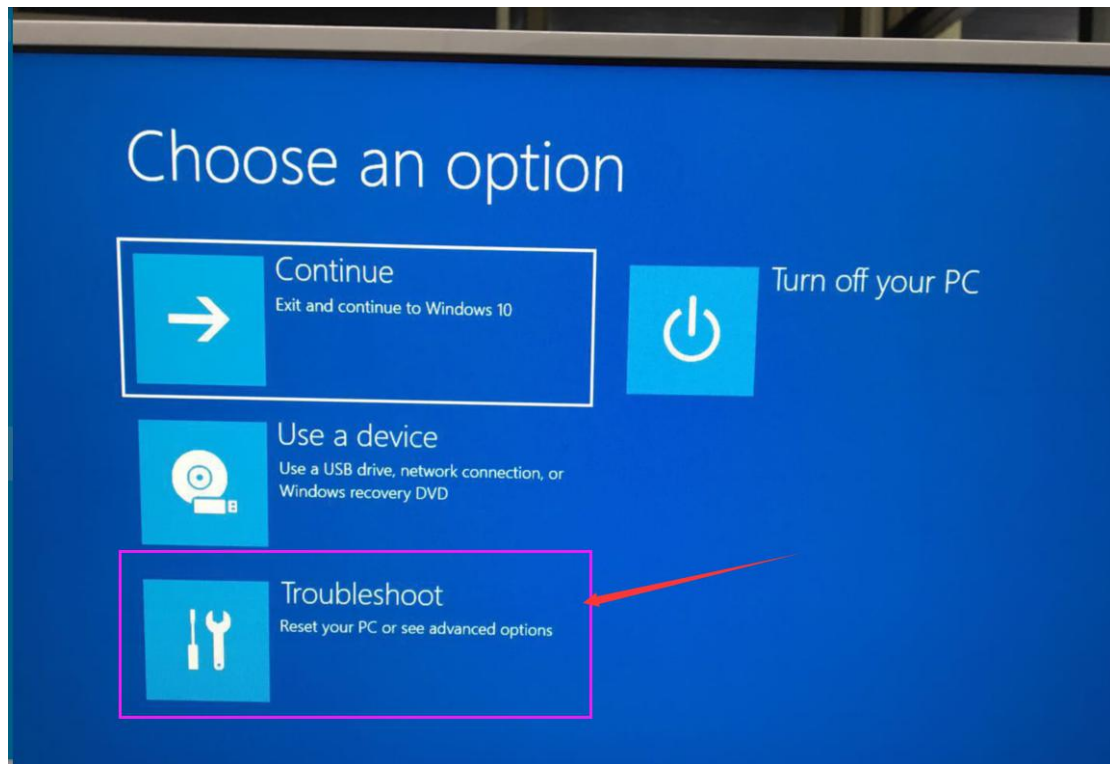
2. Click "update& security" (Windows update, recover,backups)



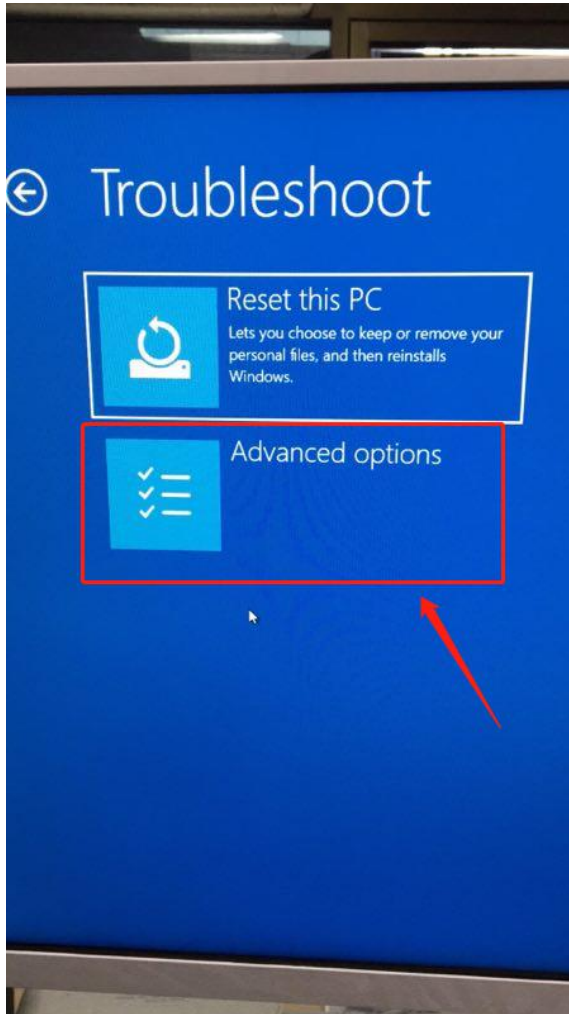
3. Click "Recovery" then click "restart now" in advanced startup, after restarting PC will enter into Reset Settings window.



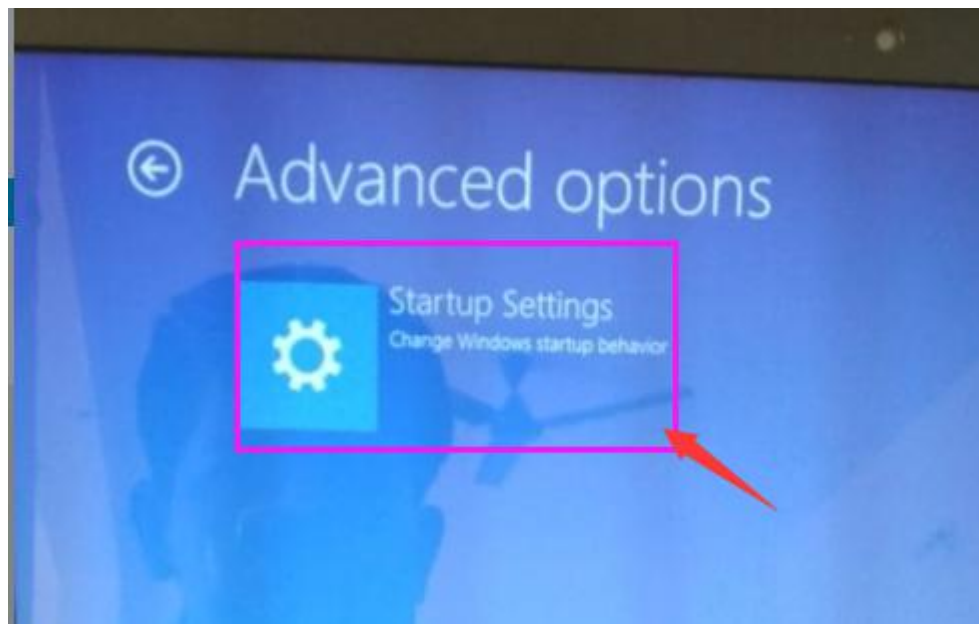
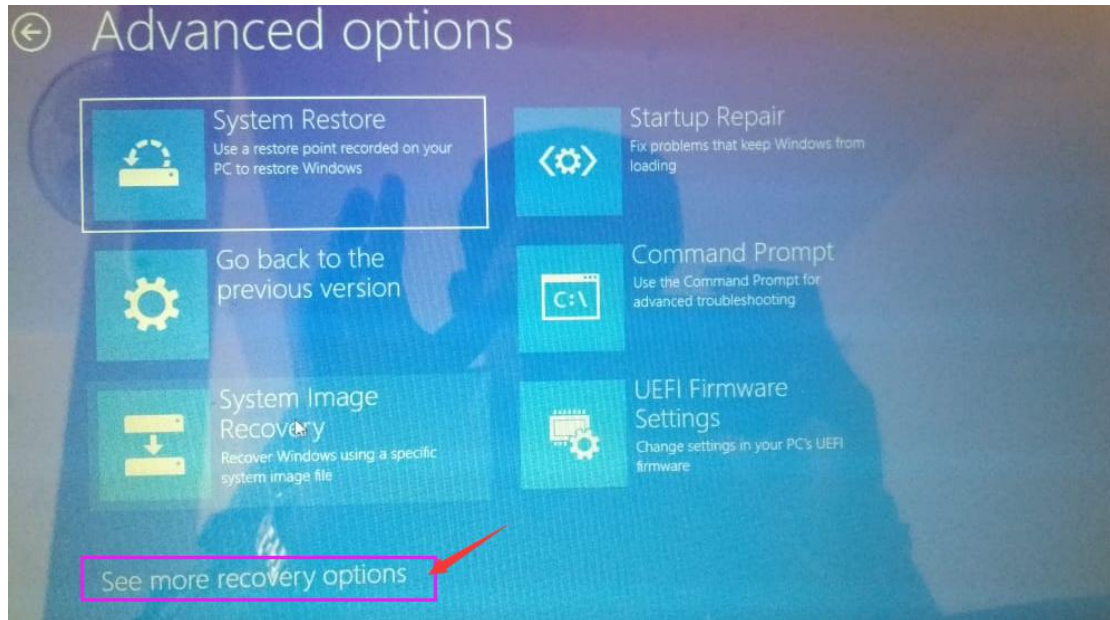
4. After entering into reset setting window, you need click "Troubleshoot"



5. Then go to the second window and click on "Advanced Options"



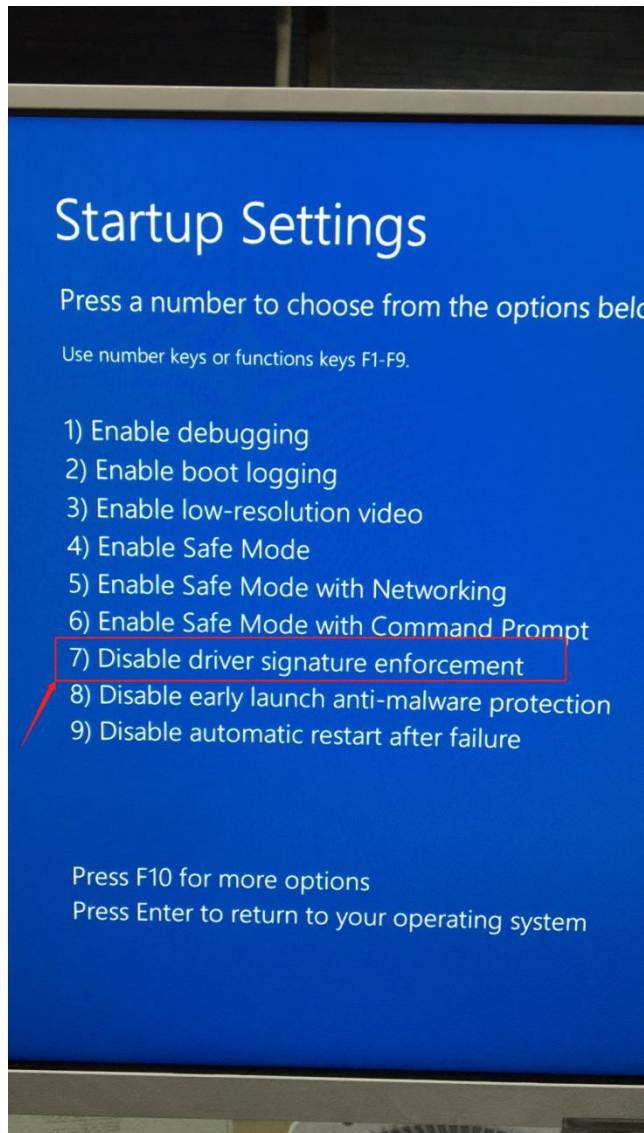
6. (If there is no "Startup Settings" item on the interface, click the View More Recovery option to see the startup settings option, click "Startup Settings")



7. After entering the startup settings window, you need to click "Restart" to activate these software.



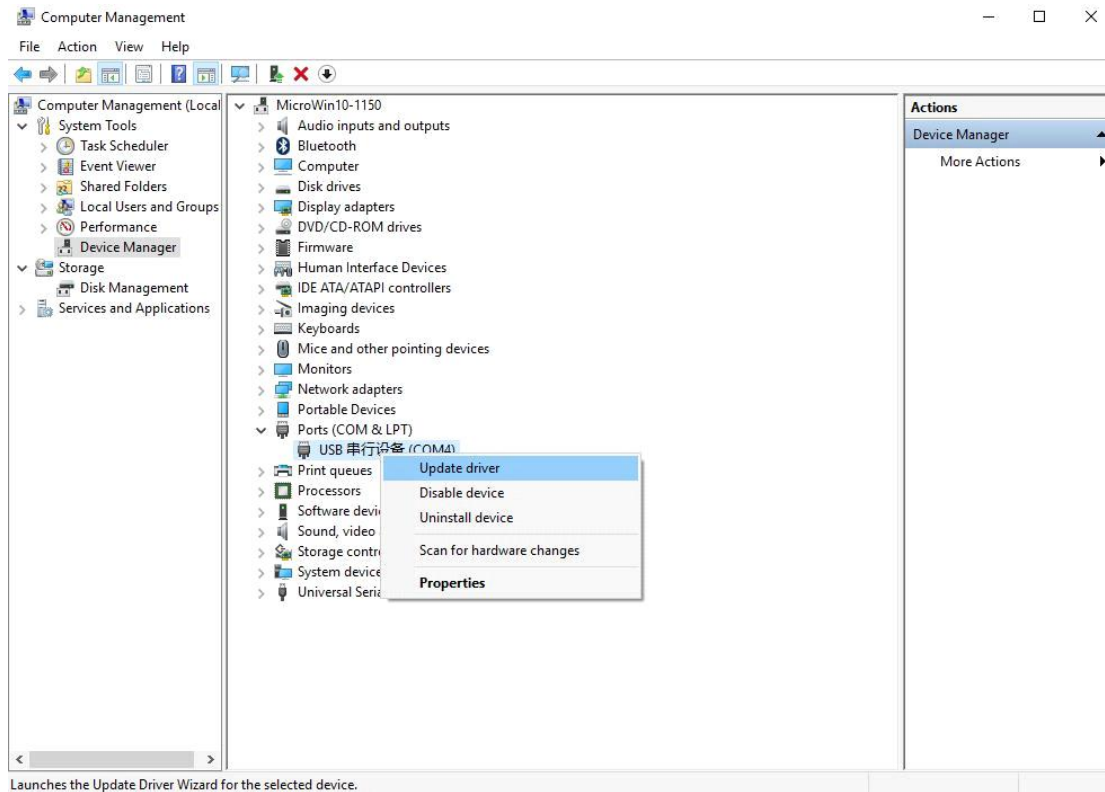
8. After the startup setting interface is restarted, press the number key 7 or F7 key on the keyboard to disable the driver signature enforcement.



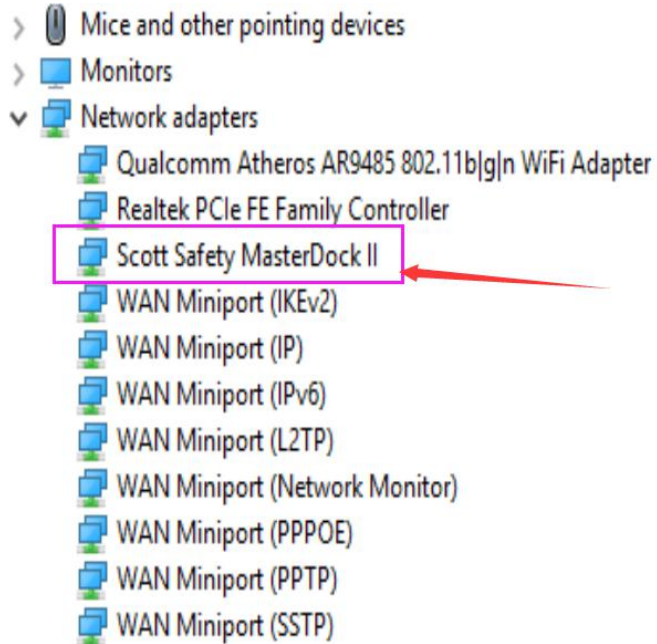
After disabling the driver forcing the signature, the computer reboots before installing the driver.

9. Open the computer device manager, the following two steps to control the settings to update:

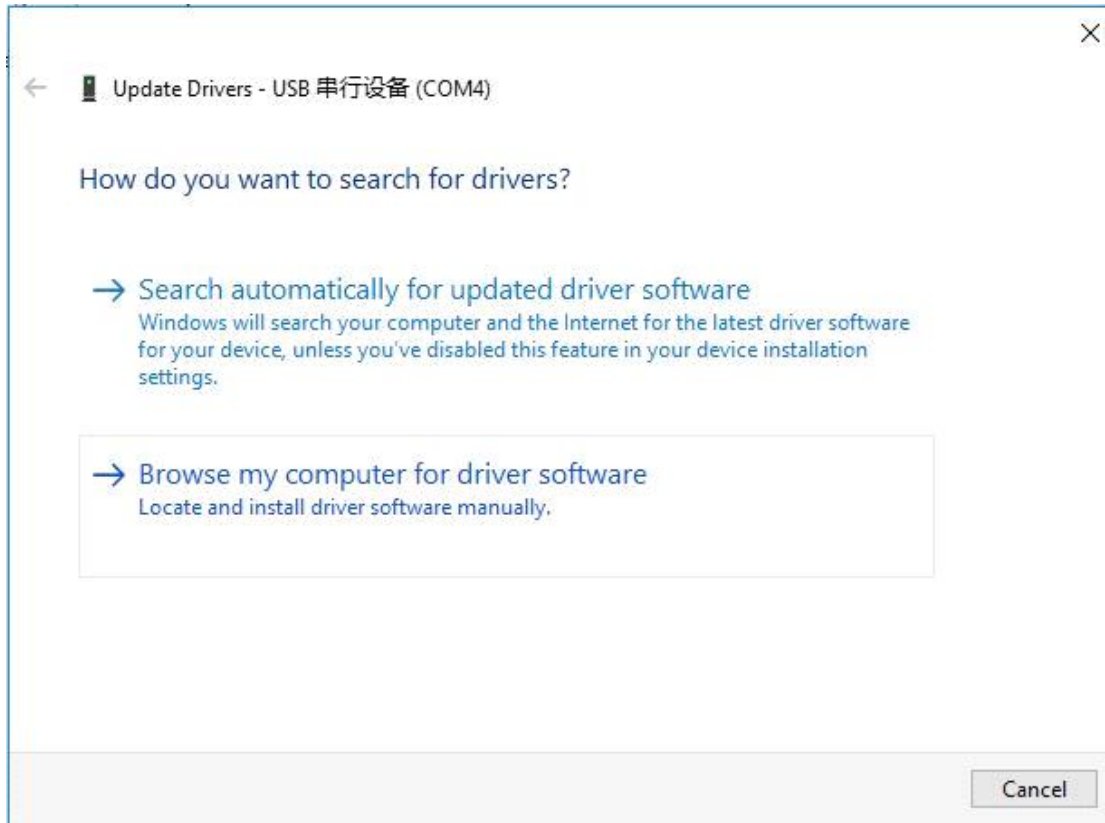
(1) If the computer will have a usb serial device in the port, then right click on the device and click Update Driver Software;



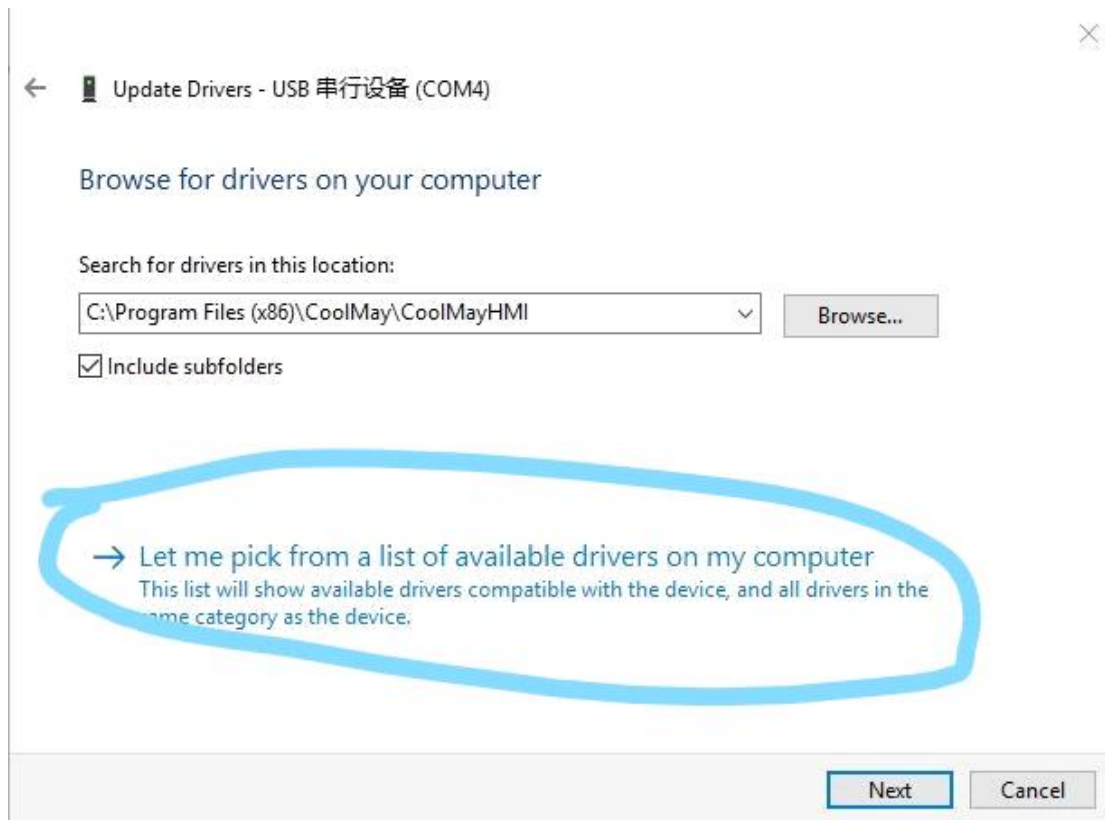
(2) Some computers will directly recognize the "Scott Safety MasterDcok II" on the network adapter, right click on the device and click on Update Driver Software;



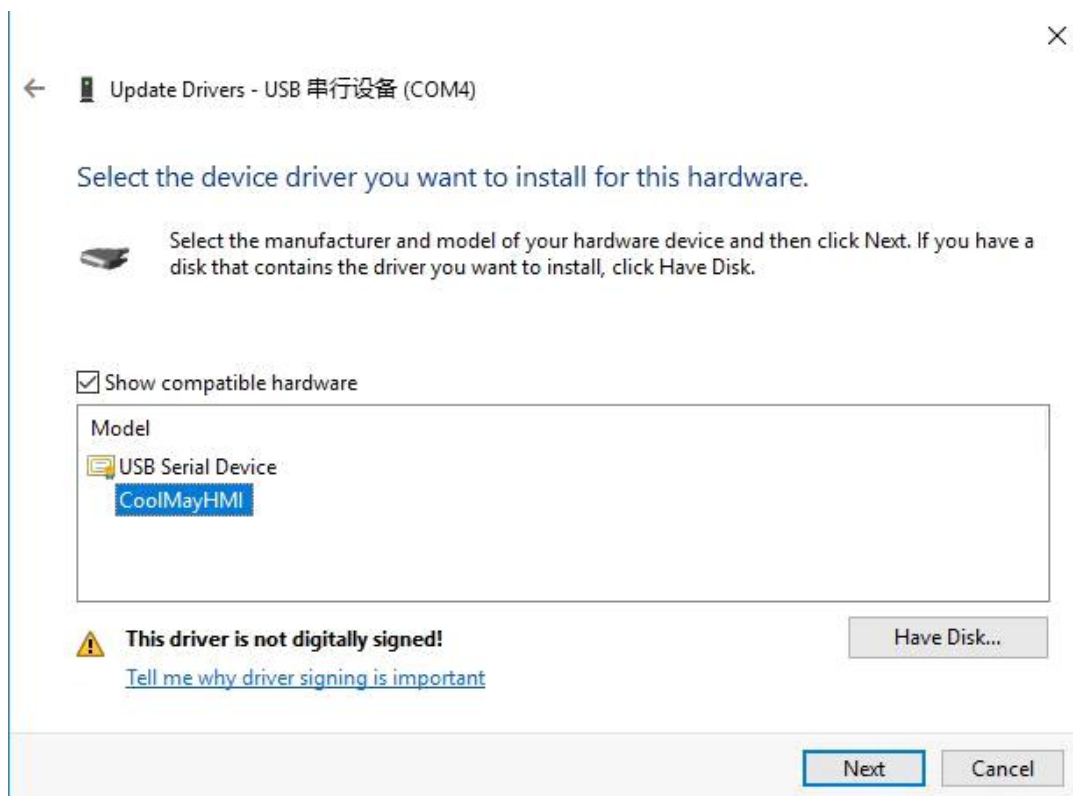
10. Choose "Browse my computer for driver software"



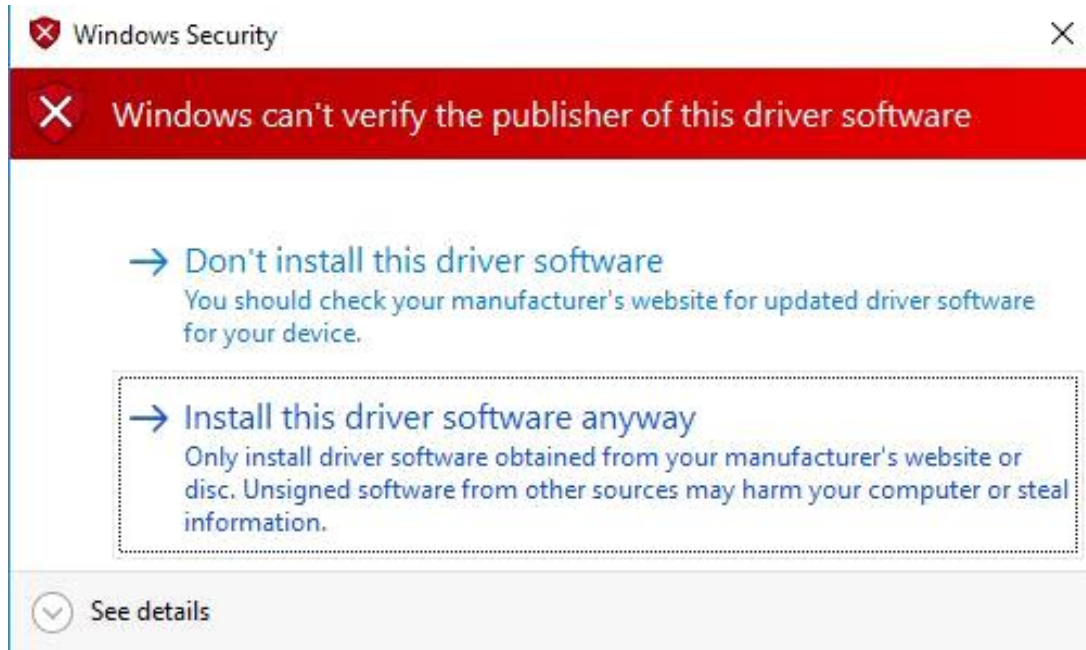
11. Choose "Let me pick from a list of available drivers on my computer";



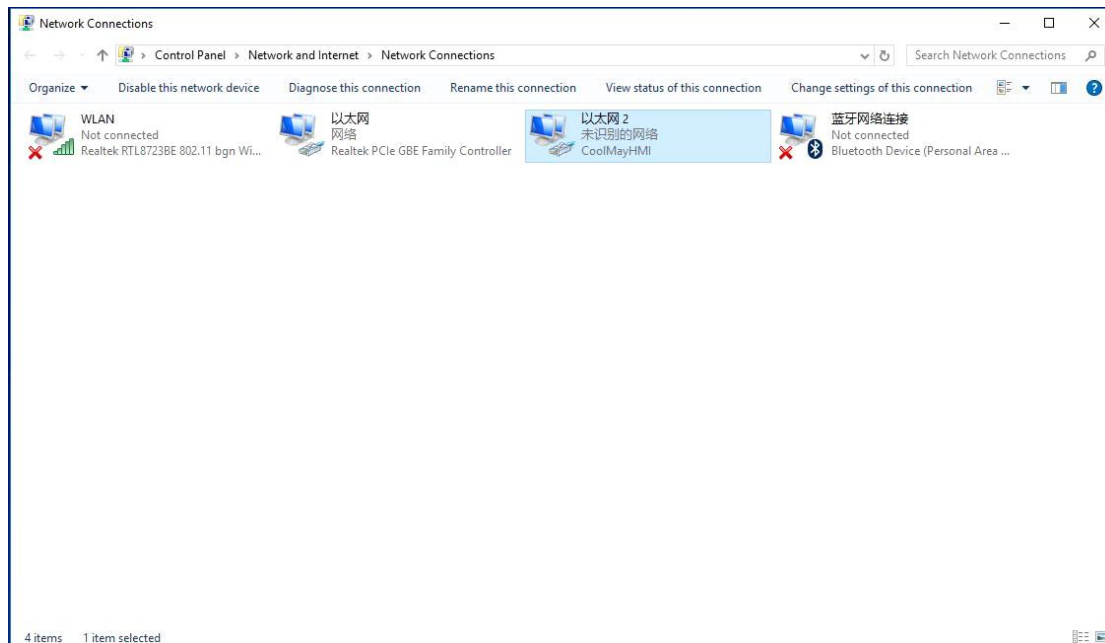
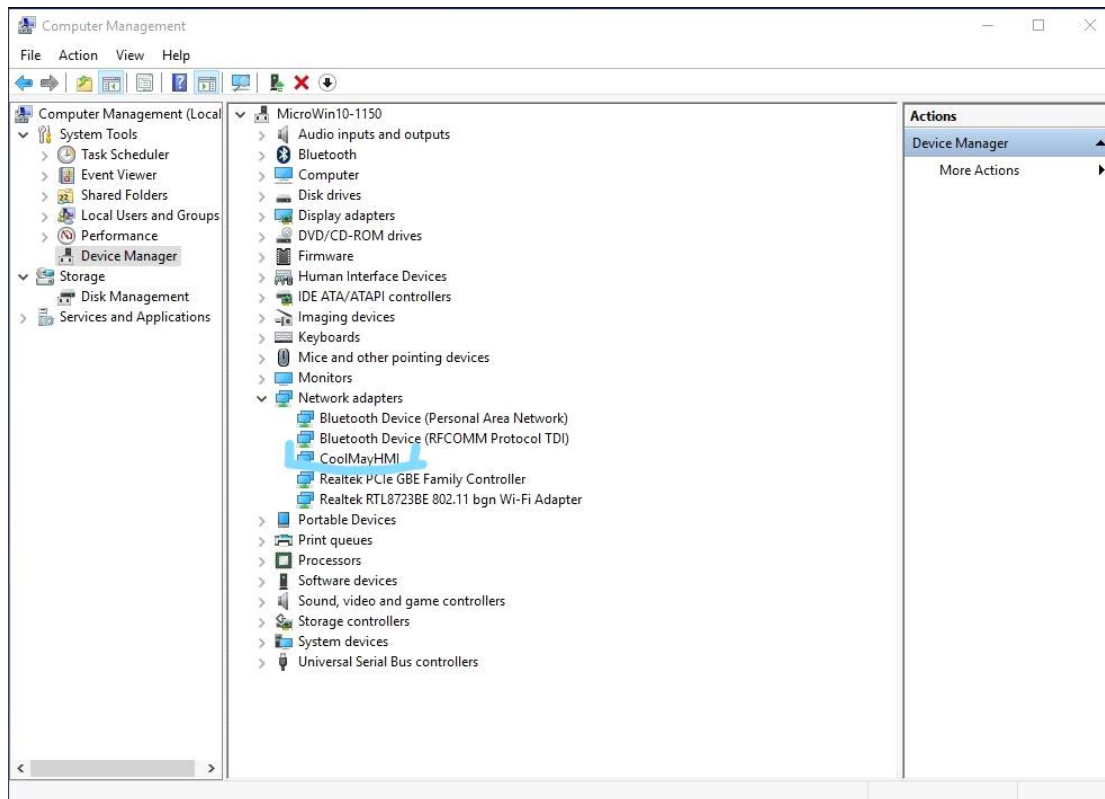
12. Chose CoolMayHMI, and click next



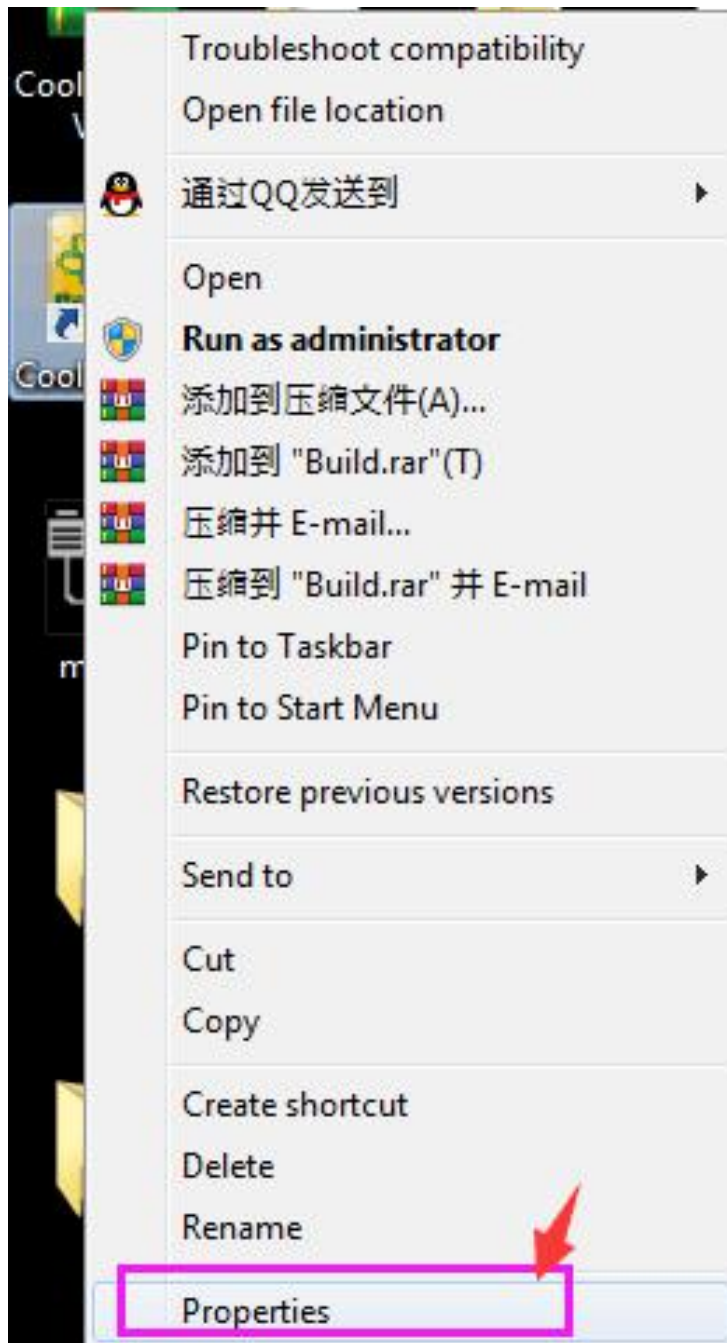
13. Choose "Install this driver software anyway", which means can be installed successfully.



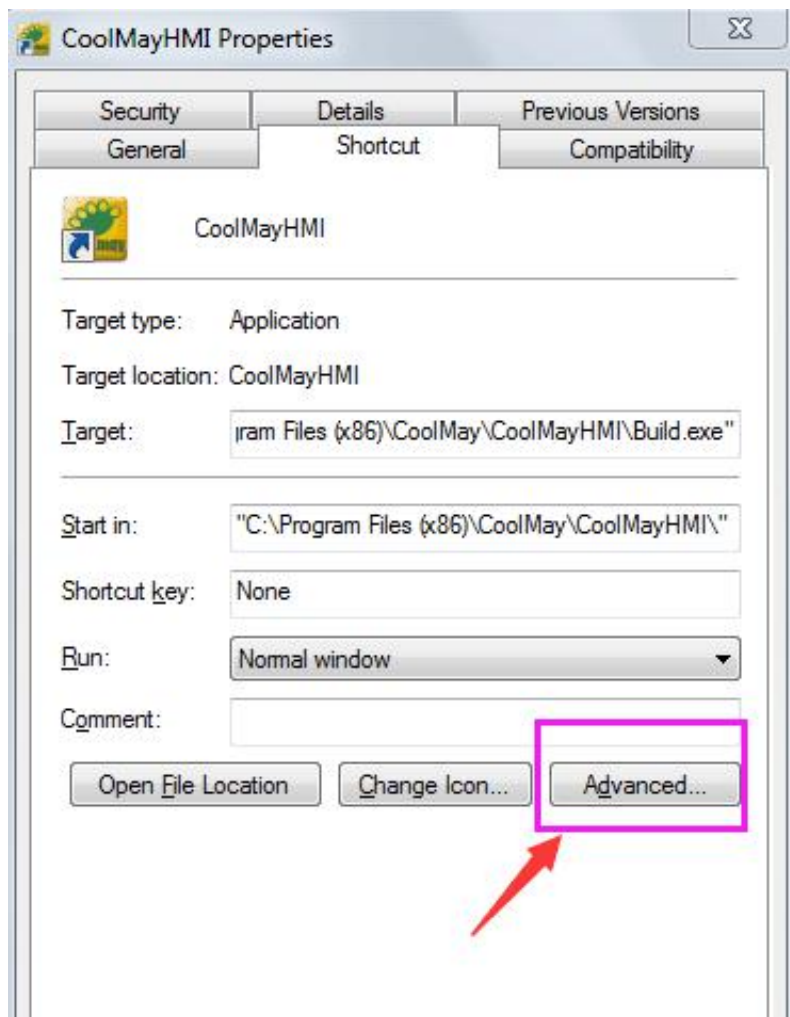
14. At this point, CoolMayHMI will be added to the network adapter, and the corresponding local connection will be added in the network connection.



15. The software needs to run as an administrator, right click on the CoolMayHMI software and click on Properties.



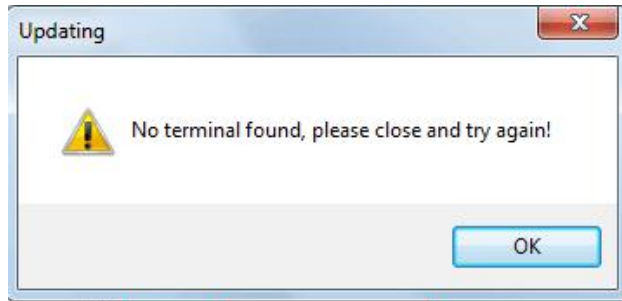
16. Click advance.



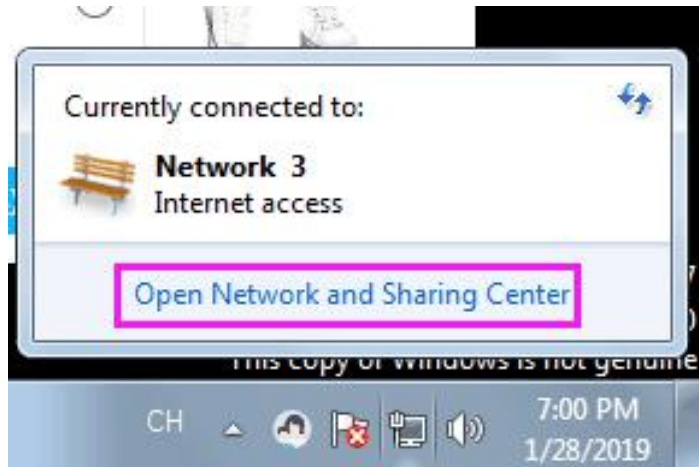
Check the Run as administrator option and make sure that each time you open it, you will run the software as an administrator.



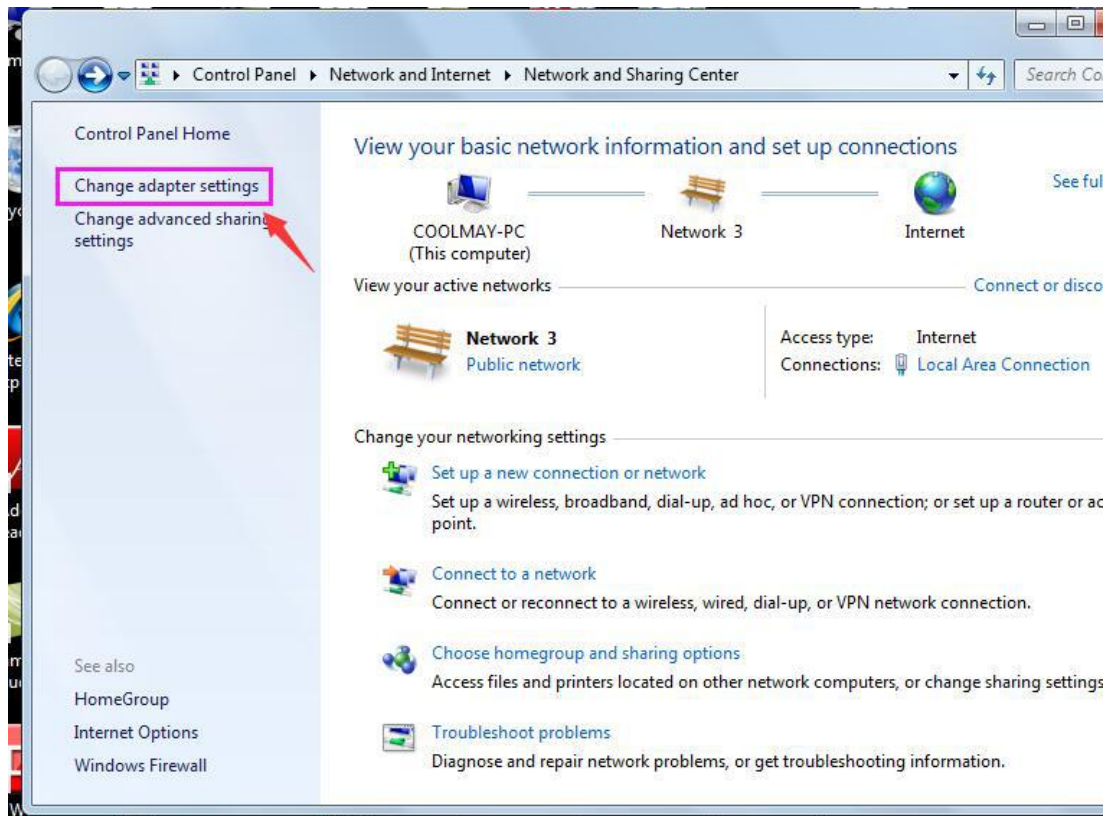
Note: If the prompt is not found when downloading the software, please close the prompt after retrying, please confirm whether the CoolMayHMI touch screen IP is obtained correctly.



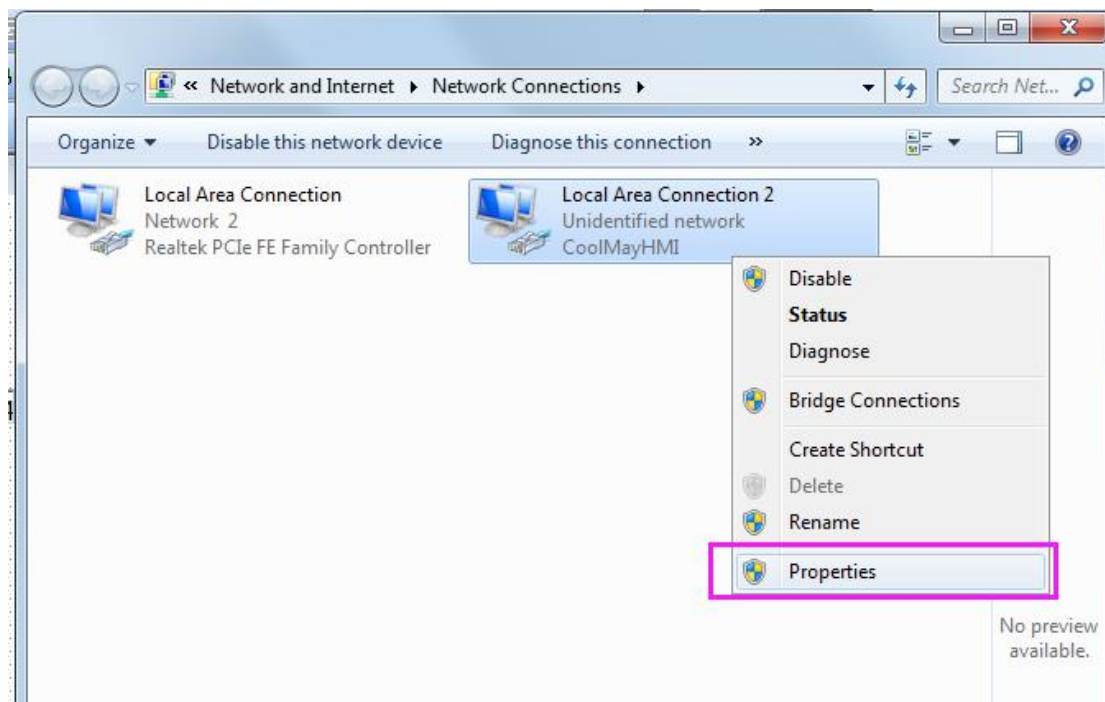
1. Open the network and sharing center.



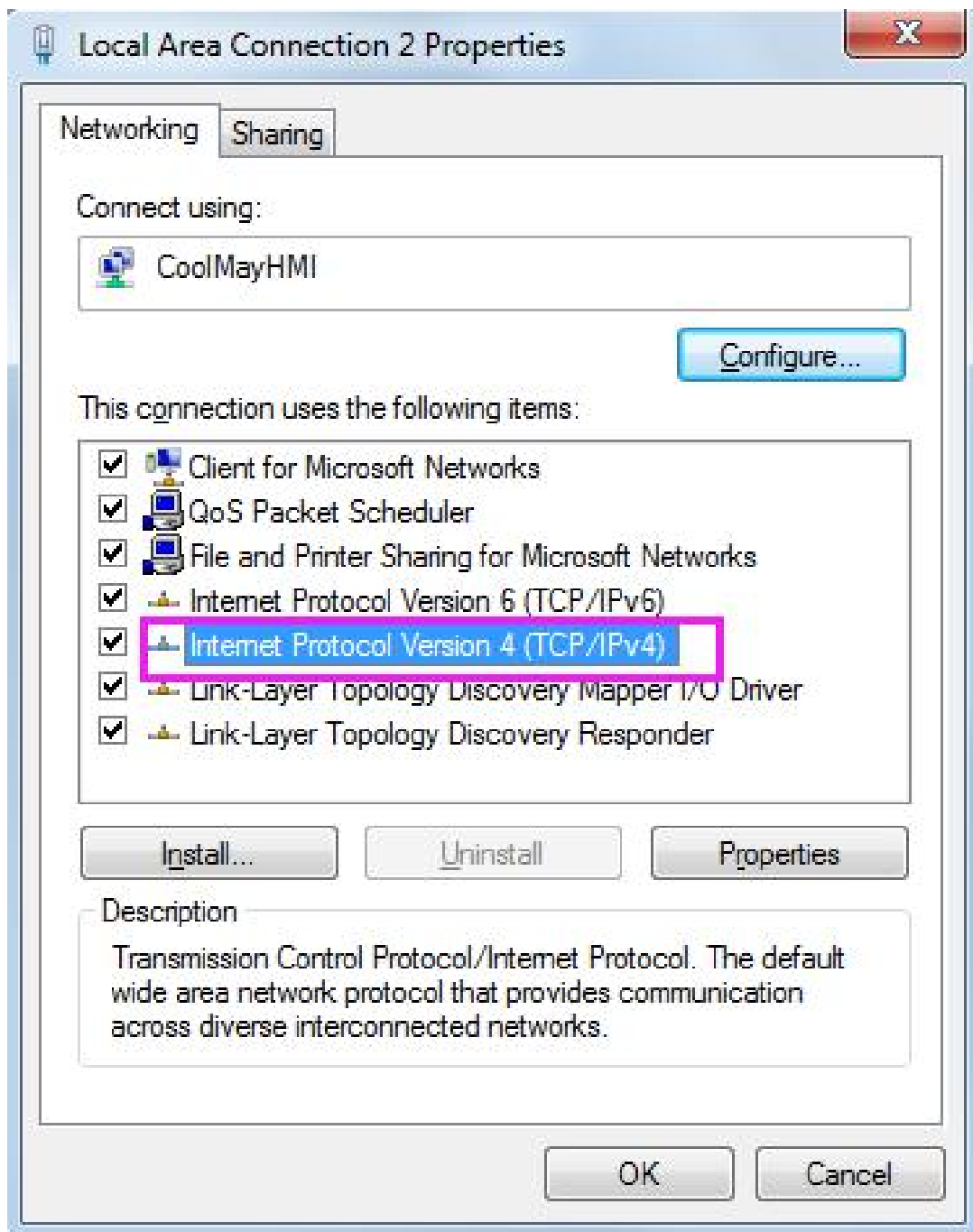
2. Click to change the adapter settings



3. Right click on the local connection corresponding to CoolMayHMI and click on Properties.



4. Double-click Internet Protocol Version 4 (TCP/IPv4).



5. Select the IP address below, the IP address can be set to 222.222.222.* (the last digit can be set to any value in the range of 2~221), and the subnet mask is fixed to 255.255.255.0.

