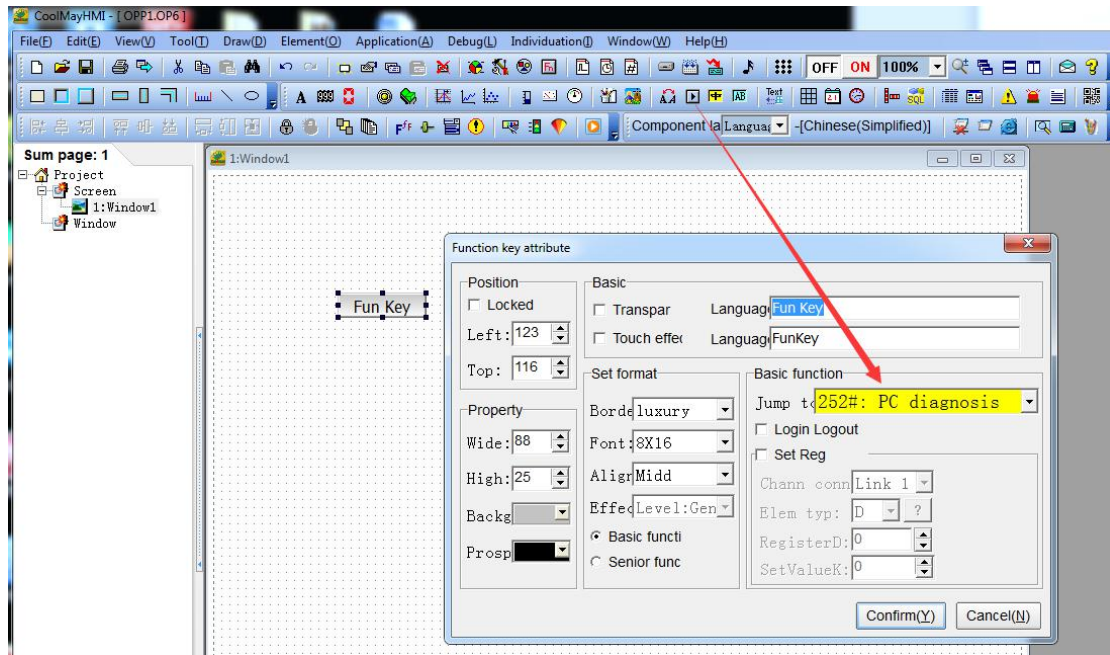


USB camera screen setting steps

1, Create a new program in the HMI software, add function keys, in the basic function choose “jump to 252: PC diagnosis”;



2, After compiling the program, download it into the product, click this function key in the product, after the PLC diagnosis screen appears, click “start” button, the camera shooting screen will appear under Video, the resolution of the display is fixed at 320*240; click “stop” button to stop shooting; now this function only supports real-time shooting, and does not support storage.

Note when choose USB camera :

Only support USB camera similar or compatible “ZC VIMICRO 301PLUS Quick Master Chip”.