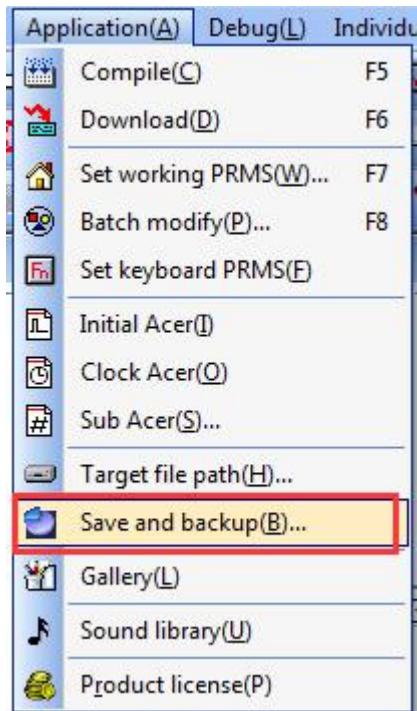


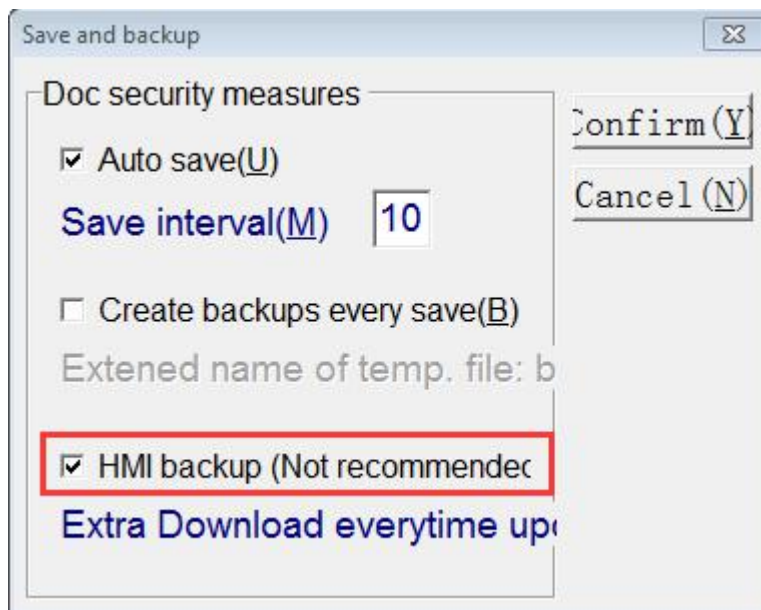
How to read HMI program

HMI program cannot be read by default, it should be set as below if needed to read:

1. [Application]---[Save and backup]



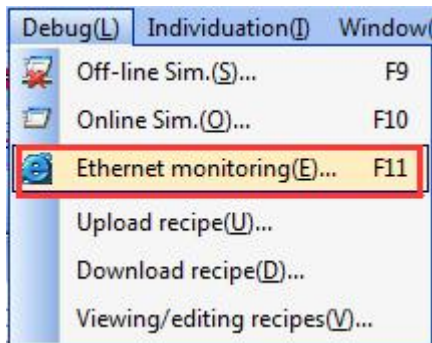
2. Tick [HMI backup]



3. Compile HMI program, download to HMI, program which is running in HMI then can support to be read.

Steps of HMI program to be read:

1. Power on HMI, link HMI programming cable to PC, click[Debug]---[Ethernet monitoring]

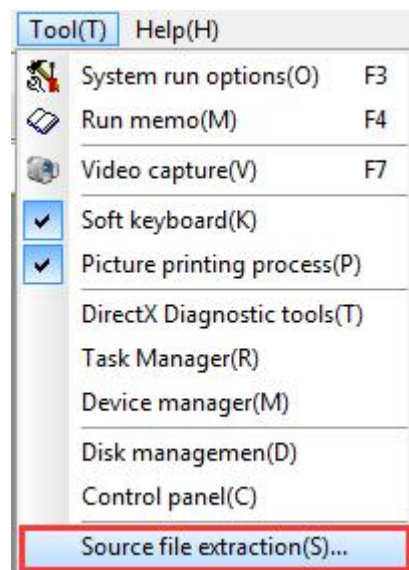


2. IP address select 222.222.222.222, click [Connect].

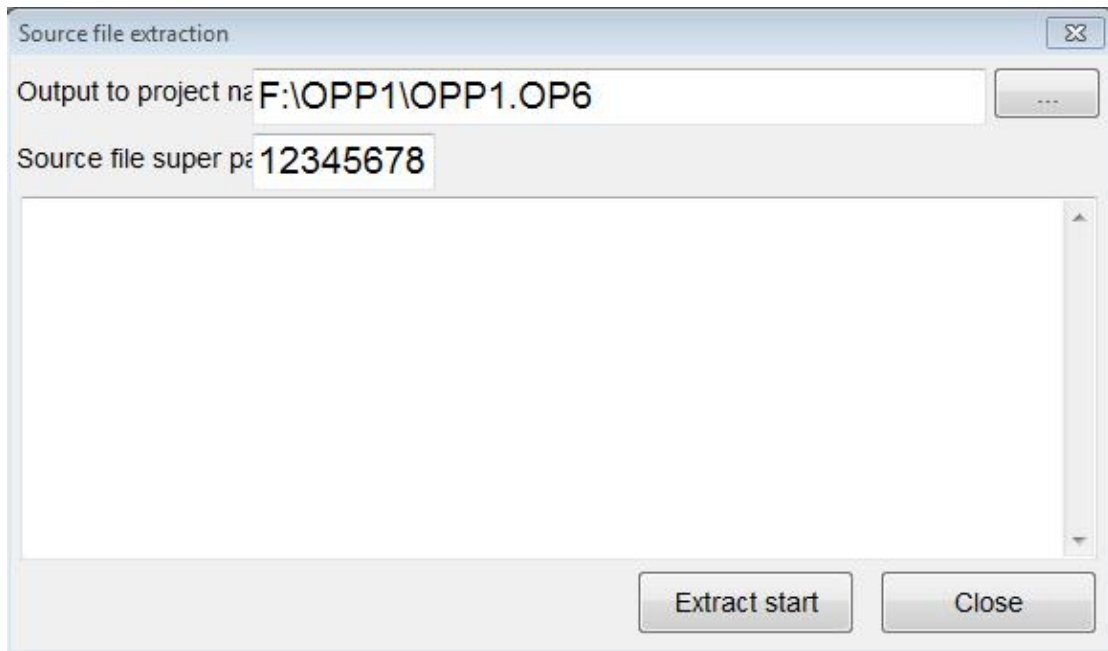


Thus can connect with HMI program.

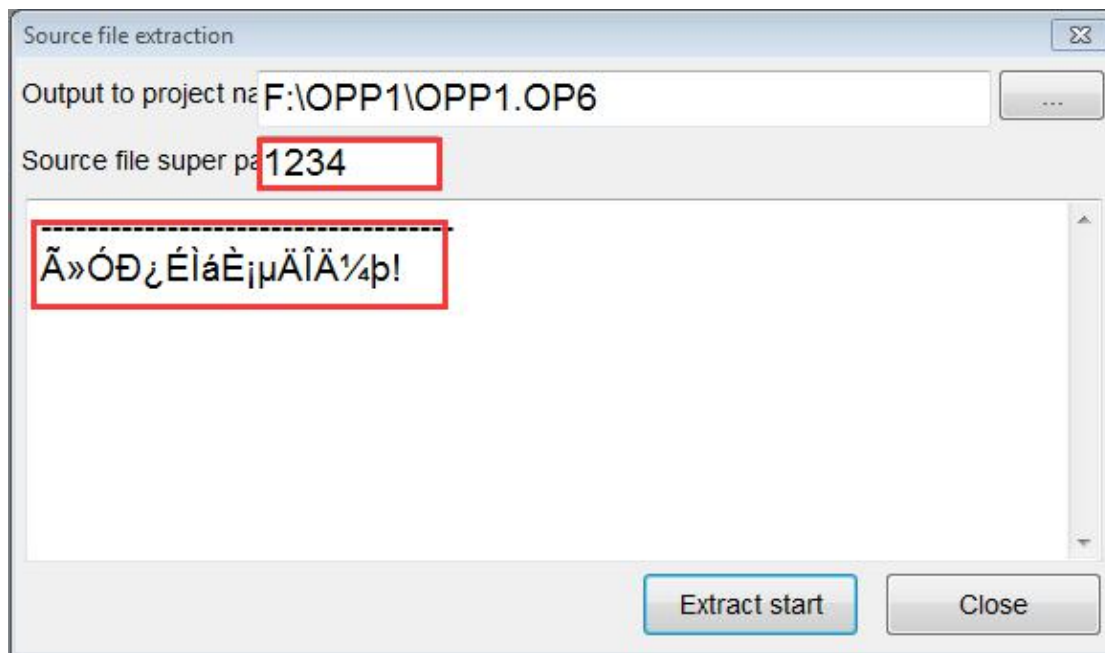
3. In Ethernet monitoring software, click [Tool]---[Source file extraction]



[Source file extraction] window will pop up, well set the position where the extracted file will be stored, find the file after downloaded, set super password of the original file , click [extraction start]



Note: super password of original file is the same with HMI program, if you don't know HMI password, it will be showed out that super password of original file is wrong, that means the read is failed.



After well extracted, open the corresponding position, check the well read HMI program.